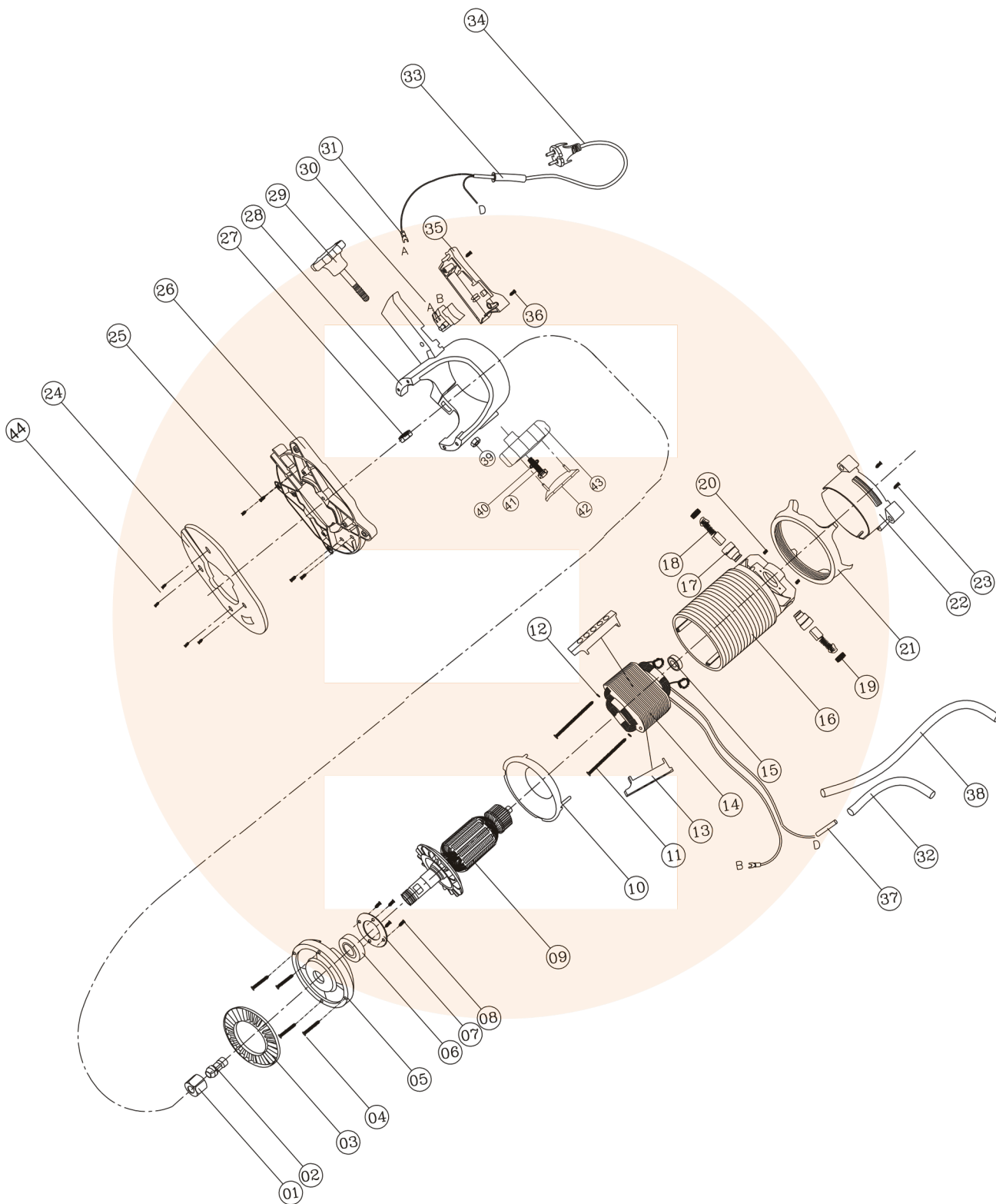


# ENDICO®

## AT 8



NOTE : PARTS ARE SUBJECTS TO POSSIBLE MODIFICATION WITHOUT NOTICE DUE TO IMPROVEMENTS.

SERVICE PARTS SUPPLY VIA ENDICO POWER TOOLS AFTER SALE-SERVICE. WHEN ORDERING SERVICE PARTS, PLEASE QUOTE 10-DIGIT MACHINE PART NUMBER AS PER SERVICE PART

SR NO.	ITEM	PART NO.
1	COLLET NUT	1025011028
2	COLLET	1024011027
3	JALI (BEARING COVER)	1022011024
4	TAPPING SCREW	1002015202
5	BEARING COVER	1018001804
6	BALL BEARING (6004-2rs)	1019011021
7	BEARING PLATE	1020011022
8	MACHINE SCREW	1021011023
9	ARMATURE	1023011025
10	FIELD GUARD	1035011040
11	TAPPING SCREW	1002011037
12	SPRING WASHER	1033011038
13	STATOR GUIDE OUTER	1034011039
14	FIELD COIL	1128015347
15	BALL BEARING (6200-2rs)	1019011026
16	BODY	1026011029
17	HOLDER CARBON BRUSH	1028011032
18	CARBON BRUSH	1029011033
19	CAP (CARBON BRUSH HOLDER)	1030011034
20	HEX. GRUB SCREW	1031011035
21	CHECK NUT	1027011030
22	END COVER	1001011001

SR NO.	ITEM	PART NO.
23	TAPPING SCREW	1002011017
24	BACKALITE PLATE	1017014165
25	TAPPING SCREW	1002011045
26	BASE PLATE	1015094426
27	HEX. NUT	1013011014
28	FRAME	1003011003
29	MAIN LOCK KNOB	1012091095
30	SWITCH	1006011006
31	FORK CONNECTOR	1007011007
32	SLEEVE PVC	1009012288
33	SLEEVE MAIN LEAD	1010011011
34	LEAD	1002014328
35	SWITCH COVER	1004011004
36	TAPPING SCREW	1002011005
37	INLINE CONNECTOR	1008011008
38	SLEEVE PVC	1009011010
39	HEX. NUT	1013011014
40	WASHER	1019161165
41	HEX. BOLT	1067162277
42	COVER (CARRY HANDLE)	1071161163
43	CARRY HANDLE	1062161162
44	MACHINE SCREW	1021011023